

---

# Community Workshop Pack – The Mayor's Big Transport Conversation

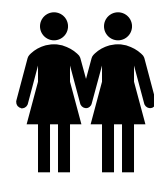
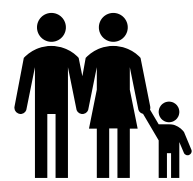
**CLAIRE WARD**  
MAYOR OF THE  
EAST MIDLANDS



# Your Community Workshop Pack



- This pack is designed to help community groups and organisations lead their own conversations on the Mayor's Big Transport Conversation.
- You can choose which parts of the pack to use. You don't have to use it all; you can focus on those issues that matter most to you.
- You can visit our webpage to learn about the Big Conversation.
- We recommend reading the Executive Summary before starting.
- Please take part in the consultation process.
- Feedback can be sent in through the online questionnaire.





# The Mayor's Big Transport Conversation



**The East Midlands Combined County Authority covers Nottingham, Nottinghamshire, Derby, Derbyshire, with a population of 2.28 million people.**

**EMCCA is now the Local Transport Authority for the region. As such, we have a great opportunity to shape the long-term transport strategy.**

**Life is all about connection: building relationships, learning and working together, and looking out for one another. Transport is one of the most important ways we connect.**

**EMCCA works with local councils and partners to improve transport, manage investment and support inclusive growth.**

**We have £2.2 bn of transport funding to take us to 2032. We are beginning a conversation about what our Transport Plan should seek to achieve over the next 15 years.**



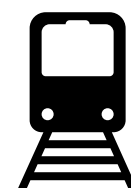
# Travel and Transport



At the heart of the Mayor's Transport Plan lies an important vision: that by 2040, people in the East Midlands will have reliable, inclusive and sustainable ways to travel and stay connected.

Transport affects all of us in many ways:

- the journeys we make, and the choices we have about how we travel;
- the journeys we don't make because it feels too difficult, for various reasons;
- even when not travelling, the transport system affects our health, our neighbourhoods, our environment and the safety and independence of our children;
- and it affects the way we access goods and services.





# We need your views

**We want to understand the local transport issues from across the region.**

**We need the views of many different people from across the region, to help us to continue to develop the Mayor's Transport Plan.**

**Please open this link to capture your thoughts and submit them to the consultation. [www.eastmidlands-cca.gov.uk/mayors-transport-plan/](http://www.eastmidlands-cca.gov.uk/mayors-transport-plan/)**

**You can save your work as you go, and not all questions require an answer if you run out of time. Please submit whatever you have done.**





# Discussion prompts

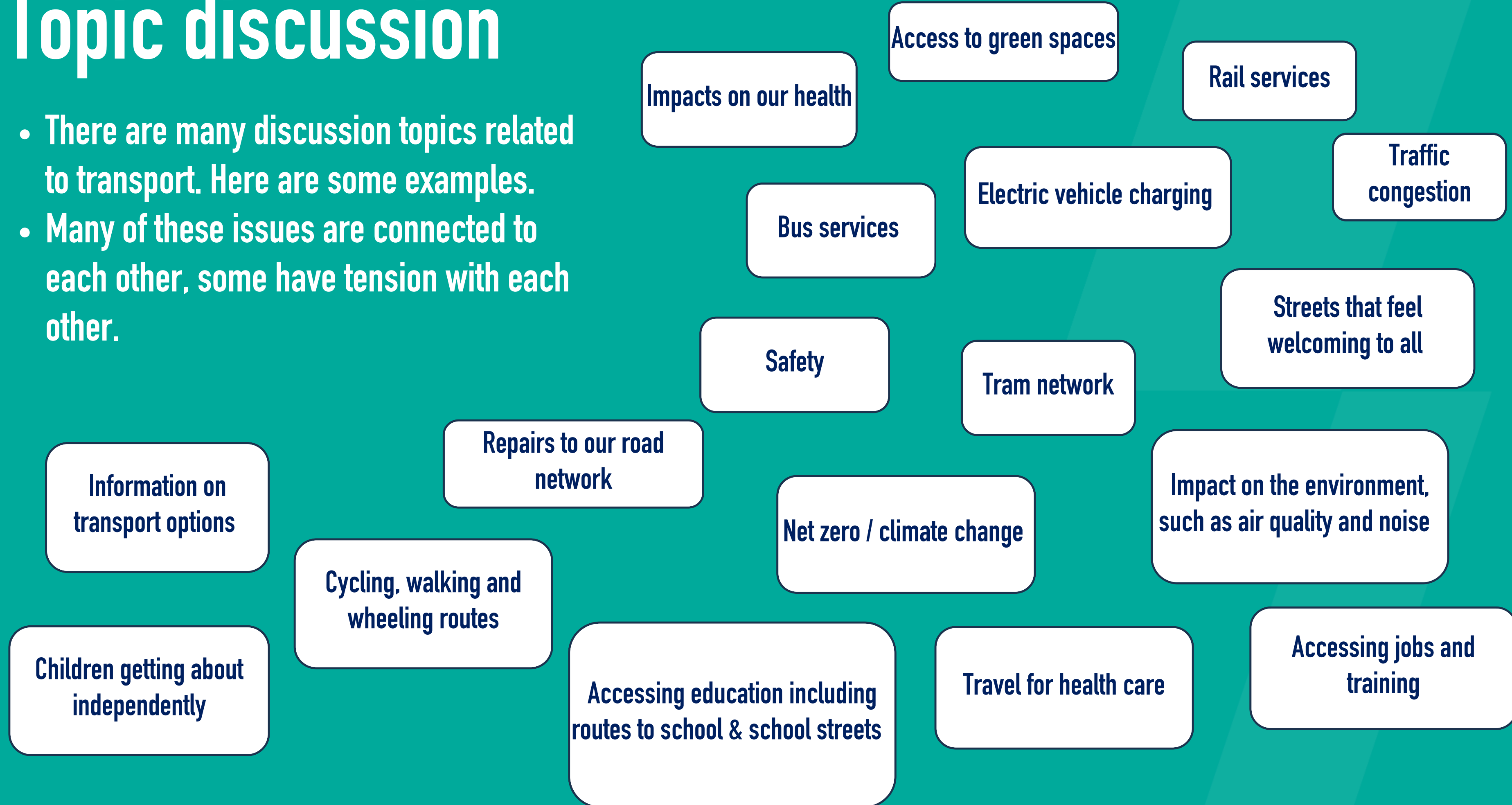
**Before we get started, let's take a moment to think about some of the roles of transport and how it affects us, and how it affects the places we live and move through.**

**Let's think about transport today and what might change between now and 2040... What do we want to change?**



# Topic discussion

- There are many discussion topics related to transport. Here are some examples.
- Many of these issues are connected to each other, some have tension with each other.





# Aims of the Transport Plan

**Questions 3–5 in the survey focus on the aims of the Transport Plan.**

**These questions seek to understand the importance of the different aims.**

**This will guide how we invest our funding, and our decisions.**



# Before writing the Transport Plan, EMCCA needs to agree which aims are most important.

The consultation Discussion Document sets out four aims:

- To increase modal choice (the different ways to make each journey i.e. car, bus, train, bicycle, walking)
- To better connect communities
- To create greater economic opportunity
- To protect our environment

Which theme is most important to achieve? How would you rank them in order of importance? This is question 4 in the survey.

The Plan sets out seven strategic goals across these themes, and outlines 22 high level policies

Increase modal choice



Strengthened and extended public transport



Active, healthy and vibrant places

Better connected communities



Connected communities and new homes

Greater economic opportunity



A productive and inclusive economy



An integrated, sustainable, and resilient network

Protect our environment



Improving our unique natural and historic environment



Decarbonise travel as part of net zero



# Strategic goals & policies

## 1. STRENGTHENING & EXTENDING PUBLIC TRANSPORT

We want to improve public transport by reviewing and improving bus services, increasing frequency and moving to low-emission buses. We're also pushing for rail station improvements and better services, and planning new tram or light rail where it's needed most. To make travel easier, we support simpler, more connected ticketing and fares.



## 2. SUPPORTING ACTIVE, HEALTHY AND VIBRANT PLACES

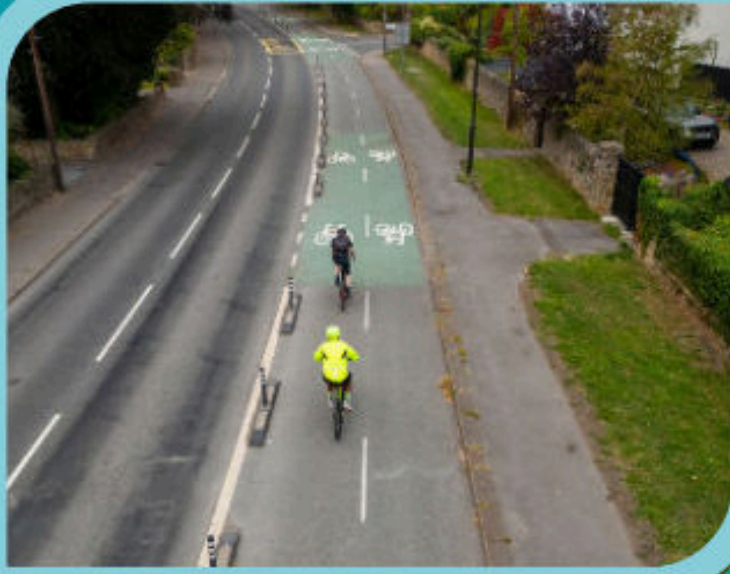


We want to make walking, cycling and using wheelchairs safer and easier, especially for getting to school and work. Our goal is to promote healthy and eco-friendly travel options, and provide safe and accessible routes.



# Strategic goals & policies

## 3. CONNECTING COMMUNITIES & NEW HOMES



We want new homes to be well-connected with good travel options. We want transport hubs to make switching between buses, trains, and other travel options easier. When upgrading streets, we'll focus on creating healthier, community-friendly spaces. We'll also work with partners to make neighbourhoods more pleasant.

## 4. FACILITATING A PRODUCTIVE & INCLUSIVE ECONOMY

We want to invest to improve transport to help us support EMCCA's goals like better access to jobs, and using new technology to improve coordination and efficiency of our transport networks.

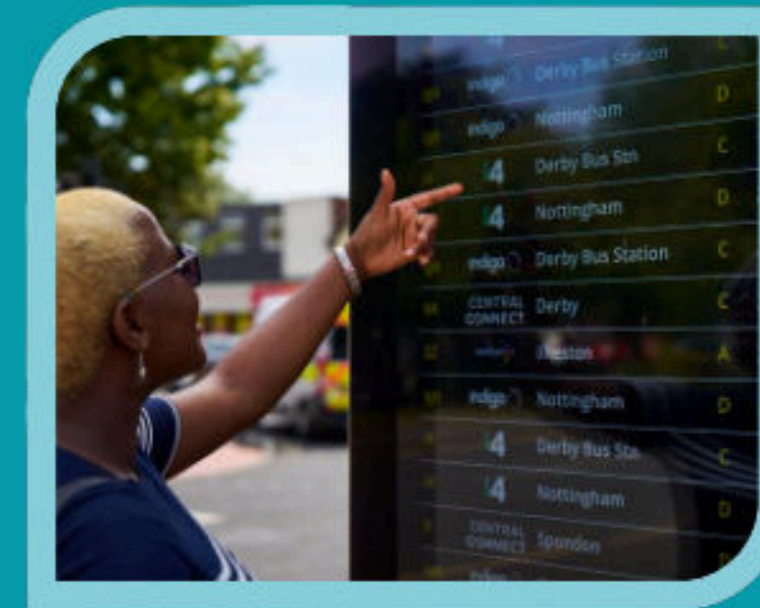




# Strategic goals & policies

## 5. PROMOTING AN INTEGRATED, SUSTAINABLE & RESILIENT NETWORK

We want to maintain roads and transport assets, address climate challenges like flooding, invest in safety projects, collaborate with neighbouring areas, and prioritise key roads for improvements.



## 6. IMPROVING OUR UNIQUE, NATURAL & HISTORIC ENVIRONMENT



We want to prioritise the environment in transport planning, making sustainability central to what we do. We'll use best practices like quieter road surfaces and improve air quality by managing traffic.

# Strategic goals & policies

## 7. DECARBONISING TRAVEL AS PART OF NET ZERO

We want to support cleaner travel by expanding EV charging, promoting zero-emission buses, and exploring alternative fuels. We're working with partners to plan energy needs and simplify travel and payment options.



**Are these the right policies?**

**Would you add any? Would you remove any?**

**Would you strengthen any? What is most important and why?**



# **Your experience of travel**

**Questions 14–19 in the survey focus on your experiences of travel,  
and what you expect from the transport system...**



# Things to consider

- How does travel affect your life?
- How does it support you to do what you need to do?
- What things about travel and transport make it difficult for you?
- Many areas of the region are rural in nature — how does that affect your travel choices?
- In urban areas, traffic levels or poor air quality might be an issue — how does that impact you?
- How does travel affect other goals?
- What works well?
- What good examples are there that we could roll out to the rest of the region?
- What should we continue to invest in, to ensure things keep working well?





# Your concerns and needs

Do you choose a particular form of transport because:

- You find it difficult to use other transport modes, perhaps due to limited mobility?
- You have safety concerns that influence your choice?
- Other options seem too expensive?
- What would help?





**Be.EV**  
**ULTRA-RAPID**  
**150KW CHARGER**

**1** **DC**  
CCS  
150kW @ 400-920V



# Thinking now to 2040

## Future travel

- How will things change in the way you access opportunities and services in the next 10 to 15 years? Will you be getting more things online?
- Road traffic levels are forecast to grow over the next 15 years.
- Environmental impacts are expected to be more noticeable.
- How might technology change?
- What do these changes mean for your transport needs?



# Through the Plan the Combined Authority wants to:

Make our roads safer

Support cleaner travel by expanding electric vehicle charge points and other low-emission vehicles

Better maintain our roads

Wants to improve transport to help support better access to jobs

Improve public transport

Future-proof the network to the effects of climate change

Make it safer and easier to walk, wheel and cycle

Use new technology to make our transport network more efficient

Protect the environment from the negative impacts of travel and transport

Make new homes well connected, with good travel options

More integrated transport options, so for example on longer journeys it is easier to switch between active travel and public transport

## How important are each of these to you? Is anything missing?



A close-up, low-angle shot of the front of a blue and white Stagecoach bus. The bus is parked on a paved surface. The front features the Stagecoach logo, the number 73087, and three circular accessibility icons: a baby stroller, a person with a cane, and a person in a wheelchair. The background is slightly blurred, showing a white car and some greenery.

# Bus travel

Surveys show that our region has some of the best bus user satisfaction in the country. But not everywhere has the same level of service.

- How satisfied are you with bus travel?
- How good is safety and accessibility of bus travel?
- How about punctuality, journey time and frequency? Are evening and weekend services good?
- Are fares affordable and simple?
- What has the biggest impact on your journeys?
- What would you like to see changed?



# Information on The Conversation

- 12-week consultation period
- Monday 17<sup>th</sup> November 2025 to Sunday 8<sup>th</sup> February 2026
- Survey is live throughout that time
- Various public exhibitions across the region throughout November and December
- Two surveys

## Survey for individuals



East Midlands  
Combined County  
Authority

The Mayor's Transport  
Plan

### Feedback Questionnaire: Individual

Before you complete this questionnaire, please read the supporting information at: ([link to web pages](#))

We'd like your feedback on the emerging principles of the Mayor's Transport Plan, as well as your experiences of using our transport network. Understanding the challenges you face and your aspirations for the future of transport in our region will help shape improvements that matter. **So, your input is vital to informing the next stages of the development of the Plan.** All responses will be anonymous, and you will not be identified.

The questionnaire should take 5 to 10 minutes to complete. The first two sections of this questionnaire explore the **ambition, goals, and key policies of the Mayor's Transport Plan.**

## Survey for organisations



East Midlands  
Combined County  
Authority

The Mayor's Transport  
Plan

### Feedback Questionnaire: Businesses and Organisations

Before you complete this questionnaire, please read the supporting information at: ([link to web pages](#))

We'd like your feedback on the emerging principles of the Mayor's Transport Plan, as well as the experiences your business or organisation has of using our transport network. Understanding the challenges you face and your aspirations for the future of transport in our region will help shape improvements that matter. **So, your input is vital to informing the next stages of the development of the Plan.** All responses will be anonymous and you will not be identified.

The questionnaire should take 5 to 10 minutes to complete. The first two sections of this questionnaire explore the **ambition, goals, and key policies of the Mayor's Transport Plan.** Section 3 focuses on **your views of what the Plan should prioritise and the travel challenges**

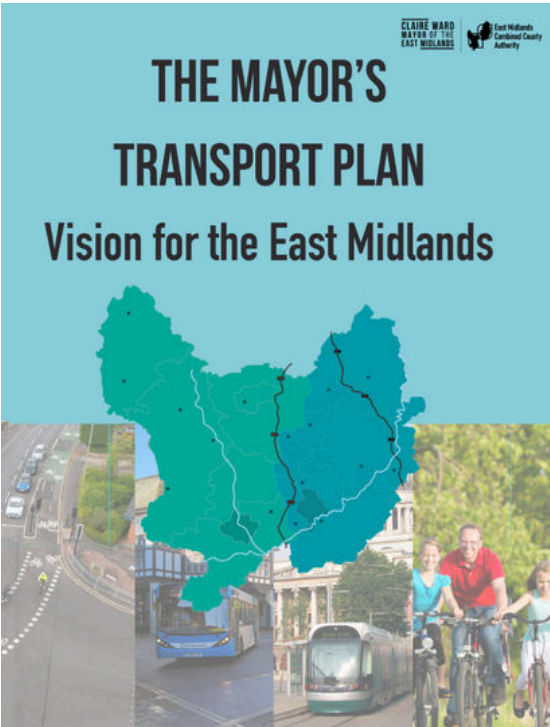


Mayor's Transport Plan  
Discussion Document

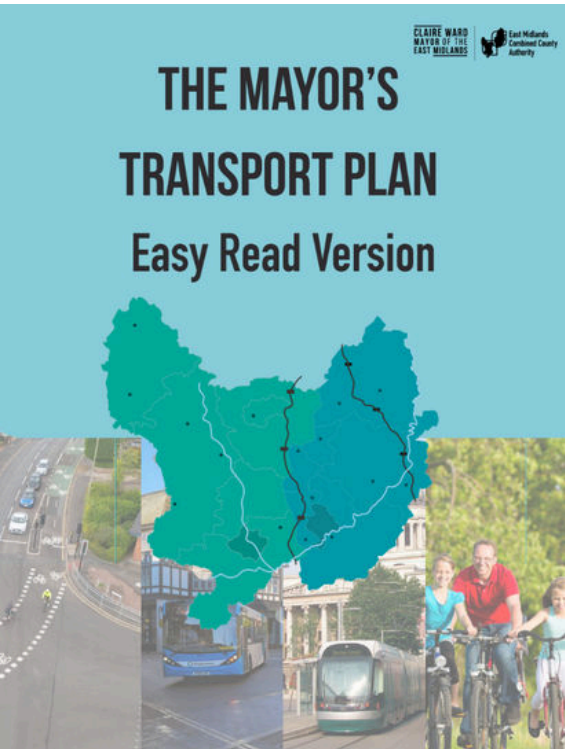
Supporting documents available  
on our website



Executive Summary



Easy Read Format



Evidence Base Summary





# Public Exhibitions – drop in and chat to the team to find out more

Location	Venue	Date	Time
Mansfield	Mansfield Bus Station	Monday 17th November	10am–12pm
Chesterfield	Chesterfield Library	Friday 21st November	2pm–5pm
Buxton	Buxton Pavilion Gardens	Saturday 22nd November	10am–1pm
Newark	Newark Town Hall	Monday 24 <sup>th</sup> November	1pm – 4pm
Bolsover	Bolsover Assembly Hall	Tuesday 25th November	3pm–6:30pm
Worksop	Worksop Library	Thursday 27th November	9am–12pm
Dronfield	Dronfield Sports Centre/Civic Hall	Tuesday 2nd December	4pm–7pm
Alfreton	Alfreton Leisure Centre	Thursday 4th December	2pm–5pm
Ashbourne	Ashbourne Library	Friday 5th December	10am–1pm
Swadlincote	Swadlincote Town Hall	Tuesday 9th December	10am–1pm
Derby	Derbion Shopping Centre	Wednesday 10th December	3pm–6pm
Beeston	Beeston Library	Friday 12th December	2pm–5pm
Nottingham	Nottingham Central Library	Saturday 13th December	10am–1pm
Sutton-in-Ashfield	Idlewells Shopping Centre	Monday 15th December	10am–1pm
West Bridgford	West Bridgford Library	Wednesday 17th December	2:30pm–5:30pm
Ilkeston	Ilkeston Library	Thursday 18th December	9:30am–12:30pm
Arnold	Arnold Library	Friday 19th December	9am–12pm

Please participate in the consultation process and  
share with all your networks.

Transport affects all of us.

Visit: <https://www.eastmidlands-cca.gov.uk/mayors-transport-plan/>

